

**FIRST QUARTER 2022 METHANE MONITORING REPORT  
COCHISE COUNTY WESTERN REGIONAL LANDFILL  
HUACHUCA CITY, AZ 85616**

**Project No. MHE – 1(a)-22  
March 24, 2022**

*Prepared for:*  
**COCHISE COUNTY SOLID WASTE DIVISION  
Huachuca City, Arizona**

*Prepared by:*  
**MH ENVIRONMENTAL LLC.  
McKinney, Texas**

March 24, 2022

 Environmental LLC  
9845 Timberwolf  
McKinney, TX 75071  
Phone: 469-286-5353  
Email: mohdrhasan@gmail.com

Mr. Martin D. Haverty  
Director  
Cochise County Public Works Department  
& Solid Waste Division  
Western Regional Landfill  
2595 North Sagebrush Rd.  
Huachuca City, AZ 85616

RE: First Quarter Methane Monitoring  
Cochise County Western Regional Landfill  
MH Environmental Project No. MHE – 01(a)-22

Dear Mr. Haverty,

Enclosed are the results of the First Quarter 2022 Methane monitoring event conducted on March 18, 2022 at the Cochise County Western Regional Landfill. The field measurements that included gas monitoring wells and facility structures were taken by Brad Colvin of Cochise County Solid Waste Division. The measurements in the monitoring probes were found to be below regulatory limits for the facility. These results should be placed in the Facility Operating Record.

MH Environmental appreciates the opportunity to provide this service to Cochise County Solid Waste Division. If you have any questions regarding this report, please contact the undersigned at 469-286-5353.

Sincerely,

 Environmental LLC



Mohd Hasan, "Hasan" MS Environ. Eng.  
Registered Environmental Professional (REP)  
Manager

Cc: *Masoud Arjmandi – ADEQ Solid Waste Unit*

**Cochise County Western Regional Landfill**  
**1<sup>st</sup> Quarter 2022**  
**Methane Monitoring Records for Property Boundaries**

**DATE: 03/18/2022**

**MONITORING EQUIPMENT USED: Landtech GA – 90**

**MONITORING CONDUCTED BY: Brad Colvin**

**LANDFILL LOCATION: 2595 N Sagebrush Road, Huachuca City, AZ 85616**

**WEATHER CONDITIONS (General): Sunny/Cloudy, approximately 43° F**

<b>Monitoring Point</b>	<b>Performance Criteria</b>	<b>*% Methane by Vol. of Air</b>	<b>% LEL Methane</b>	<b>% Oxygen</b>	<b>Time (PM)</b>	<b>Comments</b>
GMP-1S	100% LEL	0.0	0.0	19.7	2:02	
GMP-1D	100% LEL	0.0	0.0	19.7	2:04	
GMP-2S	100% LEL	0.0	0.0	19.7	2:07	
GMP-2D	100% LEL	0.0	0.0	19.1	2:09	
GMP-3S	100% LEL	0.0	0.0	19.2	2:13	
GMP-3D	100% LEL	0.0	0.0	18.7	2:14	
GMP-4S	100% LEL	0.0	0.0	19.3	2:18	
GMP-4D	100% LEL	0.0	0.0	19.6	2:19	
GMP-5S	100% LEL	0.0	0.0	19.5	2:23	
GMP-5D	100% LEL	0.0	0.0	19.4	2:25	
GMP-6S	100% LEL	0.0	0.0	19.4	2:29	
GMP-6D	100% LEL	0.0	0.0	18.8	2:31	
GMP-7S	100% LEL	0.1	2.0	18.9	2:36	
GMP-7D	100% LEL	0.1	2.0	19.9	2:38	
GMP-8S	100% LEL	0.0	0.0	19.7	2:42	
GMP-8D	100% LEL	0.0	0.0	19.3	2:44	
GMP-9S	100% LEL	0.0	0.0	18.6	2:47	
GMP-9D	100% LEL	0.0	0.0	17.9	2:49	

\* 5% Methane by Volume of Air is equal to 100% LEL

Values in BOLD exceed Lower Explosive Limit (LEL)

S = Well depth of 18 ft bgs: D = Well depth of 38 ft.bgs

**Cochise County Western Regional Landfill**  
**1<sup>st</sup> Quarter 2022**  
**Methane Monitoring Records for Facility Structures**

**DATE: 03/18/2022**

**MONITORING EQUIPMENT USED: Landtech GA – 90**

**MONITORING CONDUCTED BY: Brad Colvin**

**LANDFILL LOCATION: 2595 N Sagebrush Road, Huachuca City, AZ 85616**

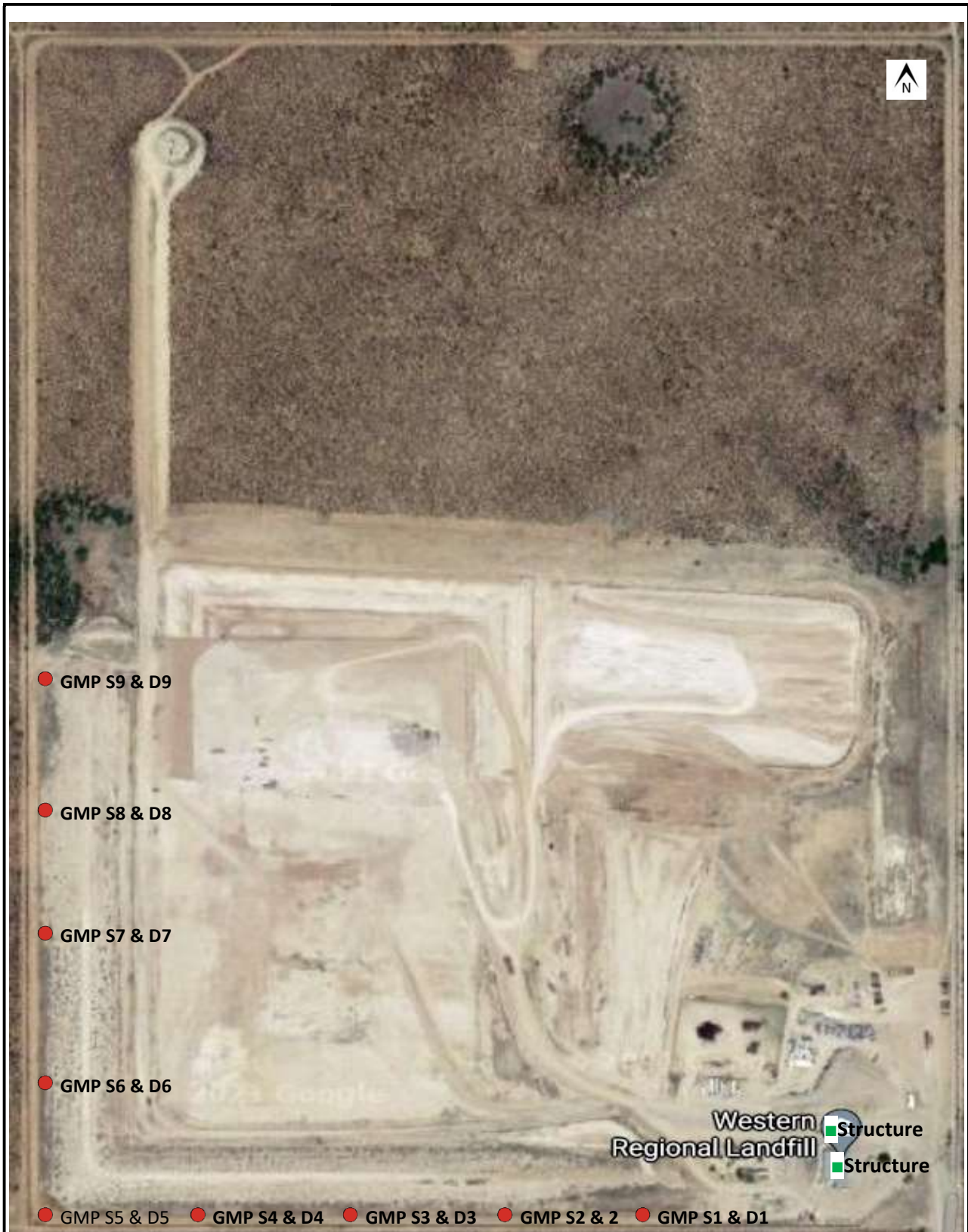
**WEATHER CONDITIONS (General): Sunny/Cloudy, approximately 41° F**

<b>Monitoring Point</b>	<b>Performance Criteria</b>	<b>*% Methane by Vol. of Air</b>	<b>% LEL Methane</b>	<b>% Oxygen</b>	<b>Time (AM)</b>	<b>Comments</b>
Office-cum-workshop 1 <sup>st</sup> Floor	100% LEL	0.0	0.0	20.2	7:02	
Office 2 <sup>nd</sup> Floor	100% LEL	0.0	0.0	20.2	7:04	
Fee shed	100% LEL	0.0	0.0	20.2	7:08	

\* 5% Methane by Volume of Air is equal to 100% LEL. Values in BOLD exceed Lower Explosive Limit (LEL)

**NOTE:**

1. Monitoring is to be conducted first thing in the morning before employees start coming in and the A/C or heating unit is off to avoid dilution of any suspected Methane gas.
2. No open flame like cigarette lighter, candle etc. should be ignited.
3. Equipment reading is to be taken at or near the ceiling level as Methane tends to accumulate at a higher level due to its specific gravity being less than that of air.



<p><b>LEGEND</b></p> <p>● Approximate Gas Monitoring Point- GMP S &amp; D (S=Shallow, D=Deep)</p> <p>■ Structure</p>		<p><b>LANDFIL GAS MONITORING LOCATIONS</b></p>	<p><b>FIG #</b></p>
		<p>WESTERN REGIONAL LANDFILL (WRL) COCHISE COUNTY, ARIZONA</p>	<p>1</p>

